



# Working in partnership to bring sustainable management to Myanmar's forests

A project supported by Prince Albert II of Monaco.  
Implemented by Myanmar Forest Certification Committee (MFCC) &  
Programme for the Endorsement of Forest Certification (PEFC)



## MFCC NEWSLETTER UPDATE

Issue 2/18  
8 August 2018

### Message from the Chairman

Myanmar Forest Certification Committee (MFCC) is the National Governing Body (NGB) of forest/timber certification schemes in Myanmar. Currently there are two schemes operating in Myanmar:

- The Myanmar Timber Legality Assurance System (MTLAS);
- The Myanmar Forest Certification Scheme (MFCS).

MFCC grew out of the Timber Certification Committee of Myanmar (TCCM). As a non-profit, non-political and impartial organization TCCM was established in 1998 to support Sustainable Forest Management, a Myanmar Timber Legality System, and improve access for Myanmar timber on the international market. The TCCM was changed to MFCC through a Ministerial Formation Order in 2013 – 'Notification No.(24/2013)'.

MFCC comprises representatives from the Myanmar Ministry of Natural Resources and Environmental Conservation (MONREC), related and relevant Myanmar Ministries, environmental NGOs, Private Sector and research and academic institutions.

There is plan underway for the reformation of the MFCC to strengthen its multi-stakeholder committee, as well as the soft launch of the third party system. Join us on our website ([www.mfcc.com.mm](http://www.mfcc.com.mm)) and various social media to group updated.



Yours sincerely,

U ShweKyaw  
Chairman  
MFCC



### Strengthening the MFCC Organization

A strengthened organisation chart was approved by 19<sup>th</sup> MFCC meeting in the figure. The Chairman and MFCC members decide the overall policy and direction in carrying out MFCC's activities in broad terms and with particular regards to MFCS and MTLAS.

### Organisational Chart of MFCC

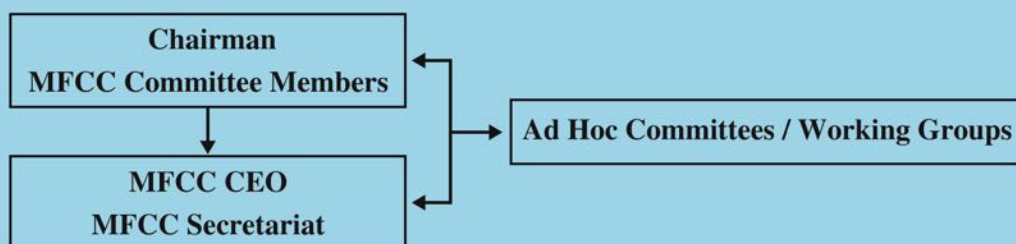


Figure 1. High Level Organisational Chart of MFCC

MFCC is assisted by the management team (MFCC Secretariat) headed by the Chief Executive Officer (CEO). The management team implements day-to-day activities of MFCC on behalf of the MFCC Members.

Ad Hoc Committees will be created for specific one-off roles such as dispute resolution and screening and evaluating Certification Body applicants.



## MFCC- PEFC project Coordination meeting, Sustainable forest management in Myanmar one-step closer

Date :26 June 2018

Venue: Jade room, Inya Lake Hotel

The half-day coordination meeting was attended by a range of stakeholders, including the Forest Department, Myanma Timber Enterprise and Department of Research and Innovation, FAO, FLEGT VPA advisors, international and national NGOs, certification bodies and the private sector.



Figure 2 Chairman announced the commitment to partnerships



Figure 3 Mr. Laity updated on PEFC and introduced the project between PEFC and MFCC

One year on, and MFCC as it reforms its forest sector is gathering pace. This was clear last month, as the Myanmar Forest Certification Committee (MFCC) held its first annual multi-stakeholder coordination meeting.



Figure 4 Project partners from MTE, FD, FLEGT, FFI, RECOFTC stand in the group photo after the project coordination meeting

This coordination meeting marks an important step in this 3-year project to support the country as it transitions to the sustainable management of its forests, funded jointly by the [Prince Albert II of Monaco Foundation](#), PEFC and MFCC.



## Open and constructive cooperation

MFCC Chairman, U Shwe Kyaw, opened the meeting, encouraging open and constructive cooperation to help realize the project goals and deliver an operational national forest certification system in Myanmar within the next two years.

In its first year, the project has helped to strengthen the MFCC secretariat, field test Myanmar's timber legality assurance system (MTLAS) and establish cooperation between EU buyers and Myanmar wood industries. Project partners also helped to the national system documentation and conducted auditor training.



*Figure 5 Partners discussed important issues such as the feedback from EU-Brussels meeting and the need for CF to be further considered*

“Over the last six months, the auditor trainings and participatory assessments have been instrumental in building a robust pathway for credible assessments against the Myanmar Forest Certification System,” said Mr. Gan Boon Keong, an international forestry certification assessor who carried out the auditor training.

“Whilst Myanmar faces challenges to demonstrate the sustainability of its forest products, this first year has laid the necessary foundation to meet the project goals, and in particular develop the capacity of key partners to take the project forward,” concluded Richard Laity, PEFC International Development Officer, Southeast Asia.

## Find out more at [www.pefc.org](http://www.pefc.org)

If you would like to learn more about how you could get involved in the partnership,

please contact: MFCC - [timcertcom@gmail.com](mailto:timcertcom@gmail.com) or PEFC International - [development@pefc.org](mailto:development@pefc.org)

- Find out more about the project
- Download the project brief([www.mfcc.com.mm](http://www.mfcc.com.mm))

## Summary of activities

Timing	Activities
27 Nov -4 Dec	Participatory Assessment Training Part I Kawlin Timber Extraction Agency Field Visit “Training and Participatory Assessment for Timber Supply Chain” <ul style="list-style-type: none"> <li>- Internal Meeting at MFCC</li> <li>- Training by Mr. Gan Boon Keong (Consultant)</li> <li>- Field Assessment</li> <li>- Visit Kawlin Depot and Private Factory</li> <li>- Three CB’s trained, Participatory Assessment begun (Part I)</li> </ul>
19 Dec	17 <sup>th</sup> MFCC Meeting
5 Feb	18 <sup>th</sup> MFCC Meeting
22 Feb	Webinar Meeting with PEFC (Sarah) , traders and other stakeholder
13 - 20 March	Participatory Assessment Training Part II (MTLAS Principle 5 & 6) <ul style="list-style-type: none"> <li>- Visit MTE No. (8) Sawmill</li> <li>- Winding Up of the Training</li> <li>- MFCC Documentation</li> <li>- Finalize the MTLAS Checklist</li> </ul>
26 March	Project code and Document setting
30 March and 3 April	Finalization of MTLAS Audit Form with the coordination of MTE and FD
30 April	19 <sup>th</sup> MFCC Meeting
2-12 May	Certification Bodies Assessed Extraction agencies against MTLAS The following are the assessed areas; <ul style="list-style-type: none"> <li>➤ Sagaing Region, West Katha and Kawlin Extraction Agency (United Forestry Services Co., Ltd)</li> <li>➤ Magway Region, Gangaw , Thayet Extraction Agency (Nature Watch Co., Ltd.)</li> </ul>
18- 21 June	MTLAS Training and corrective actions in report writing for Certification Bodies
26 June	MFCC- PEFC project Coordination meeting at Inya Lake Hotel, Yangon



## Participatory Assessment Training Part I

*Date: 27 Nov to 4 Dec 2017*

*Venue: Kawlin Extraction Agency*

On 27 Nov to 4 Dec, MFCC and certification bodies visited Kawlin extraction agency assessment against MTLAS. The resolution is to understand 2017-18 extraction year's chain of custody from the beginning of timber extraction, transportation and inspection to the end of finished product at sawmill. Participants were from MFCC, representatives from MTE, Forest Department and third-party certification bodies including five auditors. MFCC invited professional trainer Mr. Gan Boon Keong from Malaysia to train the Forest Certification Process and Procedure. There were literature and practical trainings during 7 days and assessed no.29, Nan Kham Compartment, WonTho Township and no.196, Kaing Shae Compartment, PinlaeBu Township.

*Figure 6*  
Mr.Gan explained how to verify 2013-14 extraction MTLAS system at no.29, Nan Kham compartment. This stump was selected based on the consignment of finished products under investigating in Europe.



*Figure7*  
Field Assessment participants group photo at no. 196 Kaing Shae compartment completing a participatory assessment of 2017-2018 extraction area





## 17<sup>th</sup> MFCC Meeting

*Date: 19 Dec 2017*

*Venue: MFCC Office*

U ShweKyaw, chairman of MFCC called on 19<sup>th</sup> of December for the reforming of MFCC members against legal entity and PEFC requirements. MFCC needs reforming members since the latest MFCC reform meeting was held on July 2013. During the meeting, U Barber Cho announced the previous and follow-up MFCC-PEFC Risk Assessment and provisional acknowledgement of third-party certification bodies. MFCC decided to continue working with current staffs as MFCC and PEFC accept the legal entity although there will be more representative staff members from different sectors in the future.



*Figure 8  
U ShweKyaw( Chairman)  
talked about reformation  
of MFCC membership, with  
the draft statutes been approved*



*Figure 9  
U Barber Cho (Secretary) presented the  
requirements of certification bodies and follow up  
MFCC- PEFC Risk assessment for 17/18 extraction  
that is MTLAS verified*



## 18<sup>th</sup> MFCC Meeting

*Date: 5 Feb 2018*

*Venue: MFCC Office*

18<sup>th</sup> MFCC meeting was discussed on requirements to recognize International third-party CB, MFCC member reform and future MFCC projects. In the long-term Forest Management certification will occur, however the timber supply chain and MTLAS are the first priority to work on, according to the stepwise approach. CB screening was carried out on certification bodies including Nature Watch and United Forestry, Double Helix. MFCC was updated on the plan to finish MFCC system documentation. The members also approved the requirements for auditors, for example one forester and qualified lead auditor in each Certification Body as minimum requirement. In additional MFCC improved TOR (Terms of Reference) to become a Service agreement for third-party contract to made stronger.



Figure 10 U Shwe Kyaw (Chairman) presented the acknowledgement of three local CBs and one international CB



## Webinar Meeting with PEFC

*Date: 22 Feb 2018*

U Shwe Kyaw, Chairman of MFCC welcome more than 20 participants to Webinar on the updates, outlooks and discussion on the PEFC&MFCC project in Myanmar.

During the webinar MFCC provide the overview of the PEFC & MFCC project, activity update and plan for the coming second and third quarters. After the short presentations, there was the discussion session to know about outlooks, comments and suggestion especially on the supply chain verification. It is intended to clarify the activities on the timber legality, traceability of timber to the origin of the forest and 3<sup>rd</sup> party verification under MTLAS. The webinar was a good opportunity for private sector to understand MFCC and how to use MTLAS phase I.



*Figure 11 U Shwe Kyaw (Chairman) discussed MFCC-PEFC project activities update and plan for next plan*



## Participatory Assessment Training Part II: Principles 5 & Audit Document preparation

*Date: 13 to 21 March 2018*

Participatory Assessment Training Part II which led by Mr. Gan Boon Keong and Mr. Ismail took place at MTE No.8 Sawmill and National Wood private sawmill from 13 to 21 March together with Secretariat staffs and third-party representatives. The assessment was checked against MTLAS principle 5, 6 and the results were analyzed by representatives of MTE and Forest Department after the training. The training also intends to give replicating courses to MTE, Forest Department and private sectors subsequently. During the training, System Documentation Professional Mr. Paul Wilson coordinated with MFCC for MTLAS Document system: Mr. Ismail introduced COC and the importance of segregation.



*Figure 12  
Introduction of  
MTE sawmill (8) extraction  
procedure and showing  
evidence for completing  
the MTLAS Checklist*

*Figure 13 U Barber Cho(Secretary)  
introduced the MTLAS system and  
explained MTLAS principle 5*





## Documentation of the MFCS

Date: 26 March 2018

Venue: MFCC Office

This diagram below shows the main documents associated with the MFCS, including MTLAS Phase 1 and 2. These documents were developed in consultation with the Technical Evaluation Committee in MFCC, in preparation for compliance to international certification system requirements. It is a simplified diagram which has a tiered documentation structure such as those detailed in Table 1.

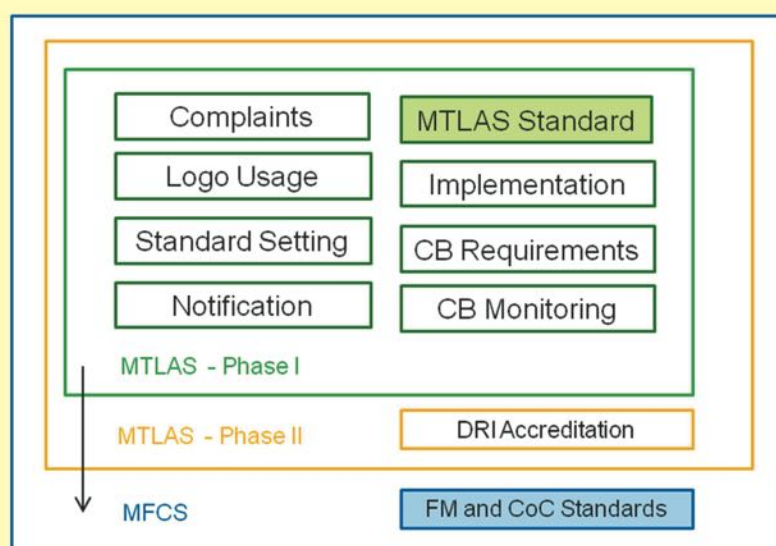


Figure 14 This is an overview of the key documents

### Key

Policy	- P
Standard Operating Procedure	- SOP
Form	- F
Template	- T

Table 1. Key documents developed to build MTLAS Phase 1 and approved by MFCC

Section	Type	No	Document Title
MFCC	P	1	Implementation Arrangements
MFCC	P	2	Guiding Principles
GP	F	1	Guiding Principles Declaration
GP	F	2	Conflict of Interest Disclosure
MFCC	P	3	Standard Setting
MFCC	P	4	Stakeholder Engagement and Public Documents
MFCC	P	5	Certification Body Requirements
MTLAS	P	1	MFCC Trademark Usage
MFCC	SOP	1	Notification of Certification Bodies
MFCC	SOP	2	Complaints, Appeals and Disputes
MFCC	SOP	3	Document Control and Record Management
DC	T	1	Policy and Procedure Template
DC	T	2	Form Template





Figure 15 General Discussion about the system documentation and coding system



Figure 16 Documentation consultant Paul (centre) explaining the documentation structure to the Technical Review Committee

## 19<sup>th</sup> MFCC Meeting

*Date: 30 April 2018*

*Venue: MFCC Office*

After Participatory Assessment part II, MFCC approved to provisionally acknowledge Local third-party Certification Bodies, Nature Watch and United Forestry on 30<sup>th</sup> April at MFCC meeting.

The first draft of MTLAS documentation which is prepared by documentation expert Mr. Paul Wilson was ready in middle of March. MTLAS assessment form will release to MTE and Forest Department and also upload on website to assess online in the future. 2017-2018 Extraction has been taking place and Double Helix was nominated to hire for Area Risk Assessment against PEFC Controversial Sources. MFCC also recommended the members for provisional acknowledgement of the Myanmar Forest Association (MFA) and Double Helix in upcoming 20<sup>th</sup> MFCC meeting.



Figure 17 U Shwe Kyaw (Chairman) presented first draft of MTLAS documentation and to inform upload on website to MFCC member





## Finalization of MTLAS Audit Form with the coordination of MTE and FD

*Date: 30 March and 3 April 2018*

*Venue: MFCC Office*



Figure 18 Finalize MTLAS Audit Form with the coordination with MFCC, FD and MTE

## Certification Bodies Assessed Extraction agencies under MTLAS Testing

*Date: 2-12 May 2018*

*Venue: Sagaing and Magway Region*

During the first week of May, Nature Watch and United forestry Services visited Sagaing and Magway Region to assess against MTLAS system. Each body includes five auditors and assessed four extraction agencies in total. This is required before the Certification Body can be fully acknowledged as a CB,

The following auditing activities were completed.

### United Forestry Services assessed area:

- i. West Katha Extraction Agency,  
Forest Department (Katha District),  
Thet-Kal-Chin Agency Depot,  
Harvesting Area- Ka Pyin Lwin Gyi (PPF)



Figure 19 Random checking the log at Thet- Kal-Chin Agency Depot



Figure 20 Checking the stump at West Katha Extraction Agency



## ii Kawlin Extraction Agency, Forest Department at Kawlin, (Harvesting Area – Compartment 196, Kaing Shae Reserve Forest), Pay Kone Agency Depot



Figure 21 Manager (Kawlin Extraction Agency) explained the extraction procedures



Figure 22 Manager( Kawlin Extraction Agency) explained the marks on the logs and how to check them.

## Nature Watch Assessed areas are:

### i. Thayet Extraction, Mindom Reserved Forest, Compartment no. 25, Protected Public Forest (PPF) 51 and Windwin, ZepyuKwin and Kyaut Ting Depot



Figure 23 Random checking the logs against the log list measurements as required by MTLAS



Figure 24 The representatives staffs of FD and MTE explained the forest boundary demarcation of this permeant reserved forest. This was an Corrective Action in the participatory assessment that has now been addressed.



ii. Gangaw Extraction Agency, KunZe Reserved Forest, Compartment no. 65 and Long Hton Reserved Forest, Compartment no. 18



Figure 25 Nature watch conducted to verify random sampling the logs to ensure segregation is possible with each log clearly marked by the revenue number.



Figure 26 Nature watch conducted to check the marks on the stump to ensure they are consistent with the FD and MTE contract

## MTLAS part III: Training for Certification Bodies on report writing and issuing corrective action

*Date: 18- 21 June 2018*

*Venue: MFCC Office*

Professional trainer (Mr. Gan Boon Keong) conducted MTLAS part III training for Certification bodies (three local CBs and one international CB). The training emphasized about the MTLAS checklist/ Audit Form and report writing. Certification bodies presented their field experiences and difficulties which are related to checklist/audit form. The trainer explained rules and regulations for certification bodies and policy documents and the roles and responsibilities of auditors. Mr. Gan presented his training materials (Part 1 – 3) to Certification Bodies. He pointed out that each certification body must conduct training for every auditor by using those training materials.

On 21 June, Discussion is led by Mr. Paul Wilson (Document expert) about document naming system and Mr. Gan training materials will be put into Certification Bodies application manual. And, they discussed certification body requirements, service agreement and issuing of certificate.



Figure 27 Mr. Gan providing MTLAS part III training to MFCC and Certification Bodies



## Certification Bodies Profiles

Myanmar Forest certification committee acknowledged three local Certification Bodies and one international Certification Body. Three local CB are United Forestry Services, Nature Watch and Myanmar Forest Association. One international CB is Double Helix.



**Contact person**

U Tin Aung Moe, Managing Director  
09-9797005161, 09420330417  
[tinaungmoe1@gmail.com](mailto:tinaungmoe1@gmail.com)



**Nature Watch**  
**Co., Ltd.**

**Contact person**

U Soe Win Htoon (Director)  
09 5063563  
[swhtoon@gmail.com](mailto:swhtoon@gmail.com)



**MYANMAR**  
**FOREST**  
**ASSOCIATION**

**Contact person**

U Myo Lwin (Director)  
09 250685406  
[Umyolwin56@gmail.com](mailto:Umyolwin56@gmail.com)



**Contact person**

U Aung Myin, Senior Timber Verification Expert  
09 5350333  
[Aungmyin.forestry@gmail.com](mailto:Aungmyin.forestry@gmail.com)

**Contact Us:**

Myanmar Forest Certification Committee (MFCC),  
Forest Compound, Bayintnaung Road,  
West Gyogone, Insein Township (11011),  
Yangon, Myanmar

[timcertcom@gmail.com](mailto:timcertcom@gmail.com)

Telephone (office):

+95 13644430

+95 1 3644431

**Contact person:**

Win Hlaing (CEO)

[wynnnhlaing@gmail.com](mailto:wynnnhlaing@gmail.com)

[www.mfcc.com.mm](http://www.mfcc.com.mm)

Twitter : @mfcc\_official

Instagram: myanmar\_forest\_certification

Facebook : @MFCCCommittee

Youtube : MFCC\_Official





Contact  
[www.pefc.org](http://www.pefc.org)  
[development@pefc.org](mailto:development@pefc.org)  
 Office Tel: +41 22 799 45 40

Contact Person:  
 Remi Sournia  
 Head of Projects & Development,  
[remi.saria@pefc.org](mailto:remi.saria@pefc.org)



[www.mfcc.com.mm](http://www.mfcc.com.mm)

Twitter : @mfcc\_official  
 Instagram: myanmar\_forest\_certification  
 Facebook : @MFCCCommittee  
 Youtube : MFCC\_Official