



Working in partnership to bring sustainable management to Myanmar's forests

A project supported by Prince Albert II of Monaco.
Implemented by Myanmar Forest Certification Committee (MFCC) &
Programme for the Endorsement of Forest Certification (PEFC)



MFCC NEWSLETTER UPDATE

Issue 1/17
22 November 2017

Message from the Chairman

Dear colleagues and partners,

The Myanmar Forest Certification Committee serves as the National Governing of the Myanmar Timber Legality Assurance System (MTLAS) and the Myanmar Forest Certification Scheme (MFCS).

It has been a busy few months with many activities organized by MFCC. These are aimed at training our new staff members and building partnerships to develop and test verification tools and approaches.

The MTLAS also serves a key role in FLEGT VPA discussions, particularly because it is based on the existing legal framework. The MTLAS Gap Analysis Project identified some key gaps that would need to be addressed, in order to assure the legality of timber exports from Myanmar.

This project is committed to support the ongoing reform process in Myanmar's forest sector with a clear focus on the delivering a national certification system.

The aims of the MFCC-PEFC project are to:

- focus on delivering a national forest certification system with global recognition
- develop and test tools which support legal, sustainable and transparent forest product trade
- build capacity while illustrating best practice
- increasing the coordination between the many related donor and private sector projects & initiatives

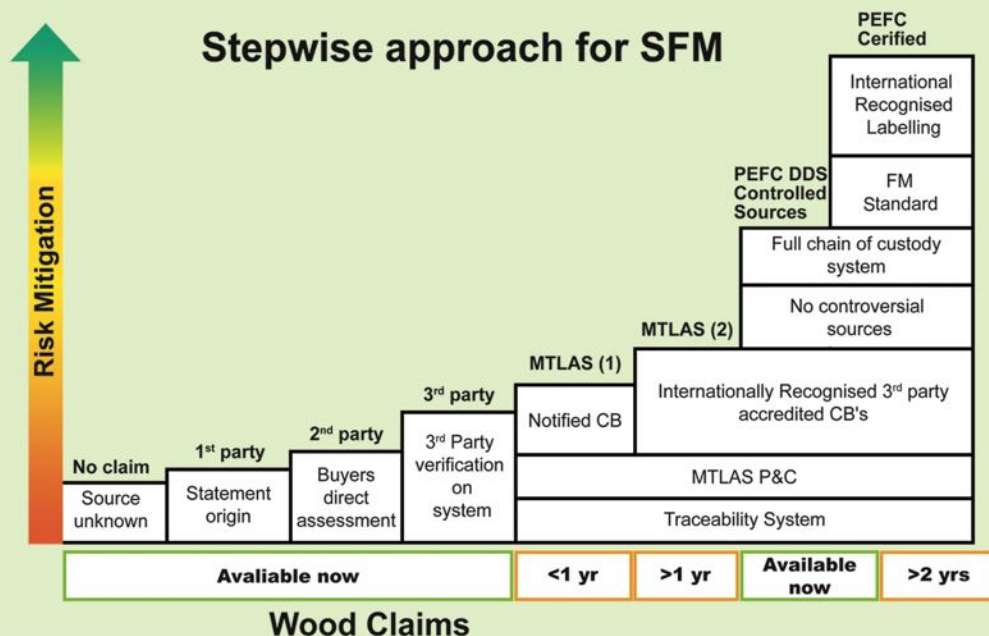


We will continue to build capacity while illustrating best practice. This approach will deliver tangible, small-scale impact in the short-term, but also greatly influence the longer-term reform process. The diagram below shows the stepwise approach adopted by the project to move towards a full chain of custody system endorsed by PEFC.

We will be working and collaborating with local partner organizations to develop and test tools, which support legal, sustainable and transparent forest product trade. Please see the annex for an overview of the project activities and timeline.

Yours sincerely,

U ShweKyaw
Chairman
MFCC



Summary of completed and current activities

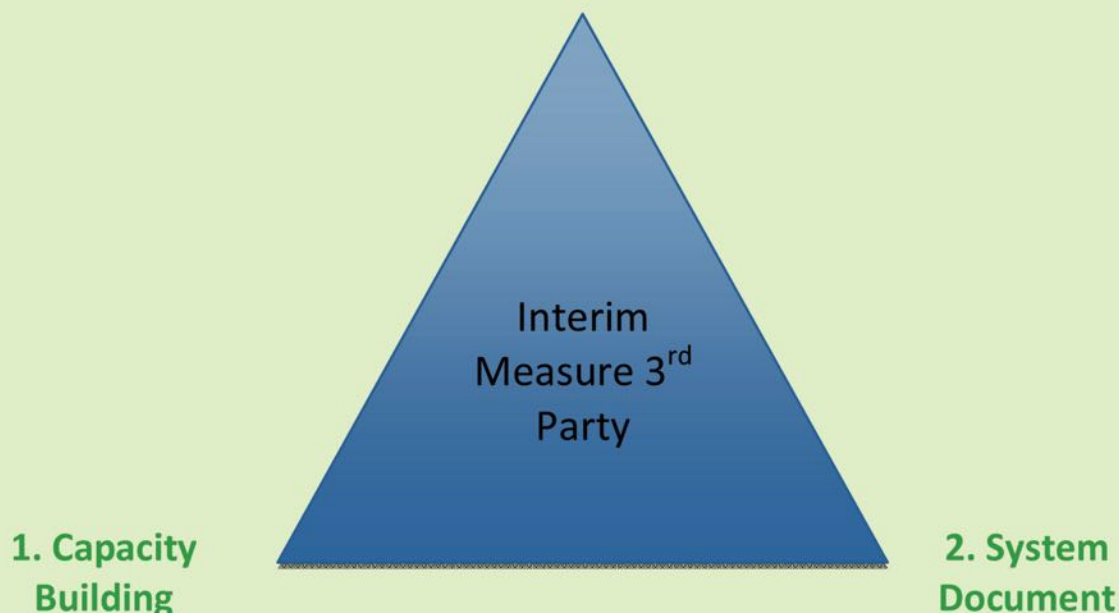
Project kick-off and hiring	
2 Aug	Knowledge platform session at University of Forestry, Yezin, Naypyitaw
3 Aug	Project introduction at Forest Department, Head Office, Naypyitaw
4 Aug	Project introduction at Myanmar Timber Enterprise, Taw Win Hall, West Gyogone, Yangon
1 Sep	Interviews of potential local candidates for MFCC
Introduction for new staff	
12-14 Sept	Training for new MFCC staff by Mr. Richard Laity
18-20 Sept	Strategic planning for capacity building within MFCC by CEO and Secretary of MFCC
Capacity building	
26 Sept	Timber verification training for new MFCC staff by Maxwell Burdick, Double Helix
11 Oct	Timber harvesting procedures training by ex-MTE staff U Aung Myin, (MFCC Member)
13 Oct	Introduction of Criteria and Indicators for Forest Management Certification by Professor U Ohn Lwin, The Nature Conservancy
23 Oct	16 th Annual Meeting of MFCC
26-27 Oct	Planning of "Training and Participatory Assessment for Timber Supply Chain" in November
10 Nov	Community Forestry training by DawKhin Moe Kyi, RECOFTC
What's next	
27 Nov – 4 Dec	Kawlin Timber Extraction Agency Field Visit "Training and Participatory Assessment for Timber Supply Chain" <ul style="list-style-type: none"> - Internal Meeting at MFCC - Training by Mr. Gan Boon Keong (Consultant) - Field Assessment - Visit Kawlin Depot and Private Factory - Winding up the whole trip



Integrated Strategy and Workplan for Cross sector Intervention

Level-1

3. Case Study Timber Extraction



1.Capacity Building

- Consultant for training verification techniques (policy ITF to practice auditors)
- Transfer knowledge to partner
- Advice on practical improvement in traceability systems
- Contribute scientific approaches
- Build capacity of verification body

2.System Document

- Review scheme documentation for MTLAS, identify document
- Consultant for develop documents the verification mechanisms in MTLAS
- Develop document verification system for 3rd party verification

3.Case Study Timber Extraction

- Identify case study area
- Develop methodology and scale up verification
- Develop IT system for tracibility

Knowledge platform session

Date: 2 August 2017

Venue: University of Forestry, Yezin



Figure 1. Barber Cho explained at the the Research Institute to develop links with other initiatives in Myanmar such as REDD and plantation development.



Figure 2. Teachers and post-graduate students were updated on the project so they can be included in the Knowledge platform.

Project introduction

Date: 3 August 2017

Venue: Head office of Forest Department



Figure 3. A high-level meeting with the forest department and FELGT advisors we briefed on the project and how they can be part of the knowledge platform

Project introduction

Date: 4 August 2017

Venue: Taw Win Hall at MTE



Figure 4. The Chairman announces the project briefing to more than 50 people in the MTE meeting hall, with participants from across the forestry sector.

Introduction for new MFCC staff

On 12th, 13th, 14th of September, a week after the recruiting new candidates, Richard Laity from PEFC gave the introduction of PEFC, MFCC organization and PEFC standard setting process. We discussed especially on Forest Management and Chain of Custody system to be familiar with MTLAS and PEFC standard which helps to improve, and retain the skills and knowledge needed to do the work plan.

The newly formed secretariat structure is outlined in Figure 5.

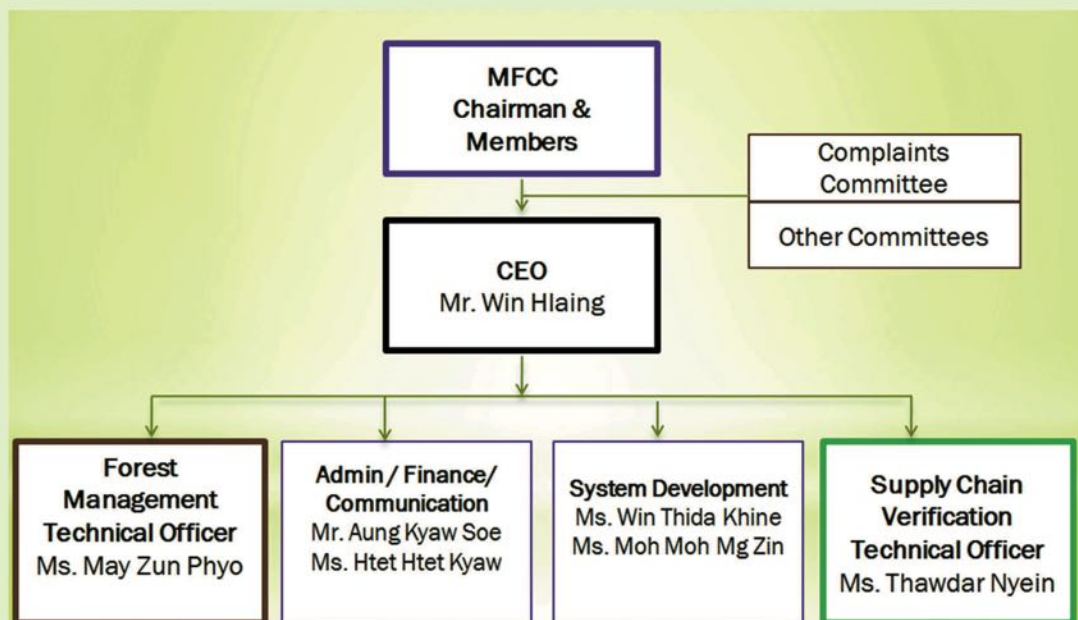


Figure 5. The structure including the new staff

MFCC Project Secretariat

Sr	Photo	Name (Role)	Experience
1		Win Hlaing (CEO)	Former DDG Planning and Forest Inventory for 27 yrs Consultant including FFI Certification Consultant and MTLAS Gap Assessment
2		Thawdar Nyein Technical Officer	Supervisor for 6 Months Phyto Si Thu Co.,Ltd teak plantations, Field Volunteer for ALARM, 1 year in Friends of Wildlife, 1 yr for MFCC/PEFC MTLAS Gap Analysis Project and PEFC project
3		May Zun Phyto Technical Officer	1 year in quality Great Wall Co.,Ltd and 3 years project project officer in Friends of Wildlife, Flora and Fauna Consultant for RAMBOLL ENVIRON Myanmar Co.,Ltd
4		Winthida Khine Range Officer (FD)	Seconded from Forest Department and Volunteer at Myanmar Forest Association for 2 months, Research Assistant at E-Gurard Environmental Services Co.,Ltd for 2 years



Figure 6.
MFCC CEO U Win Hlaing with MFCC

Sr	Photo	Name (Role)	Experience
5		Moh Moh Mg Zin Assistant	Worked in assisting in Ph.D thesis as assistant. Including work experience in data collection for WCS and Emref.
6		Aung Kyaw Soe Junior Assistant	14 Years experiences in working as Junior Assistant at Myanmar Timber Enterprise and MFCC
7		Htet Htet Kyaw Junior Assistant	(15) Years experiences in working as Junior Assistant at Myanmar Timber Enterprise and MFCC



Figure 7. (From L to R) Vicky, ThawdarNyein, April (ex-staff), Moh Moh Mg Zin and May Zun Phyzo, MFCC's latest additions. Not pictured: Win ThidaKhine

Strategic planning

On 18th – 20th of September, U Barber Cho, Secretary and U Win Hlaing, CEO of MFCC interpreted organization mapping, MTLAS system/ gap analysis and planned assessment trip to Kawlin for their infrastructure development, competencies and understanding of Myanmar forest management and legal timber.

Training by DoubleHelix

26th of September was timber verification assessment training by Maxwell Burdick, Operations Manager of Double Helix Tracking Technologies (DoubleHelix). He explained the onsite supply chain assessment and risk assessment process developed by DoubleHelix, which is beneficial to MFCC's development of our own extraction region risk assessment.



Figure 8. Max Borrick from Double Helix sharing his knowledge on consignment based verification process back to MTE



Figure 9. MFCC Secretariat staff learn about how Double Helix consignment based approaches can be used in the MTLAS and MFCS

Capacity building for MFCC

On 11th October, DoubleHelix invited U Aung Myin, ex-MTE extraction agency staff, to explain about the harvest and extraction procedures and related documentation. As well as the MFCC and Double Helix, Francesca from FLEGT also participated in the meeting.



Figure 10. U Aung Myin providing training to MFCC staff

On 13th October, Professor U Ohn Lwin presented and explained criteria and indicator of Forest Management in Myanmar to understand more on general institution requirements that are necessary to make sustainable forest management.



Figure 11. Mr Ohn Lwin finished the training of the MFCC staff in the development of the SFM C & I

MFCC 16th Annual Meeting

16th annual meeting of MFCC held on 23rd of October. Chairman, CEO, secretary and other MFCC members attend the meeting. The meeting was mostly focus on project progress, MTLAS gap analysis outcome, mock assessment at Kawlin, standard development and PEFC meeting at Finland.



Standard development and mock assessment plan with PEFC

On 26th and 27th of October, MFCC and PEFC updated the procedure for Participatory assessment trip to Kawlin extraction agency and also the standard development. Preparation for risk assessment, communication plan and document management have been decided on that day.



Community Forestry Training by Daw Khin Moe Kyi from RECOFTC

On 10th of November, Daw Khin Moe Kyi from RECOFTC gave training on Community Forestry (CF) at MFCC. This knowledge sharing training includes 4 parts. Those are:

- What is CF?
- Why CF is important?
- How can we establish CF?
- What are important points for CFs?



MFCC Participation in PEFC Week in Finland

MFCC Delegation, comprising MFCC Secretary, CEO of MFCC-PEFC Project and Assistant Director from Myanmar Forest Department, has attended the very recent PEFC Week in Helsinki, Finland. The Assistant Director from Forest Department is also the FLEGT Focal Person of Myanmar and it indicates that MFCC-PEFC is keen to link the project with the country's VPA Negotiation. MFCC delegation has witnessed few new things for Myanmar, such as how the new standard are set at the consent of the members, how the BOD are elected, and the role of Nomination Committee. In addition, how the group certification is important and how the new IT technology is contributing the traceability. The most important lesson is how to find the solution and agreement from many different opinions among stakeholders.



MFCC/PEFC Project workplan

Workplan: Myanmar SFM project	Timeline													
	2017			2018				2019				2020		
	Q2	Q3	Q4	Q1	Q2	Q3	Q4	Q1	Q2	Q3	Q4	Q1	Q2	
SG 1 Development of the Myanmar Forest Certification Scheme														
A1.Strengthen national governing body (NGB) structure														
A2. Strengthen the standards and finalize the certification system														
A3.International recognition of the System														
SG 2 Establish a Knowledge Platform to coordinate amongst stakeholders														
A4.Engage broad range of active stakeholders														
A5.Establish tools (website) and processes to facilitate coordination														
A6. Convene and report on progress/outputs from stakeholder activities														
SG 3 Establish Forestry Pilot Projects & deliver technical support														
A7 Identify partner's demonstration sites for FM across NF, CF and Plantations														
A8. Build capacity of forest managers in SFM and certification														
A9.Support verification processes														
SG 4 Establish Supply Chain pilot projects & deliver technical support														
A10 Capacity building and establishing a trainer of trainer network														
A11 Develop and promote a step-wise approach (utilising the MTLAS) to verification														
A12 Promotion of PEFC Chain of Custody and Due Diligence														

Status of MFCC's preparation

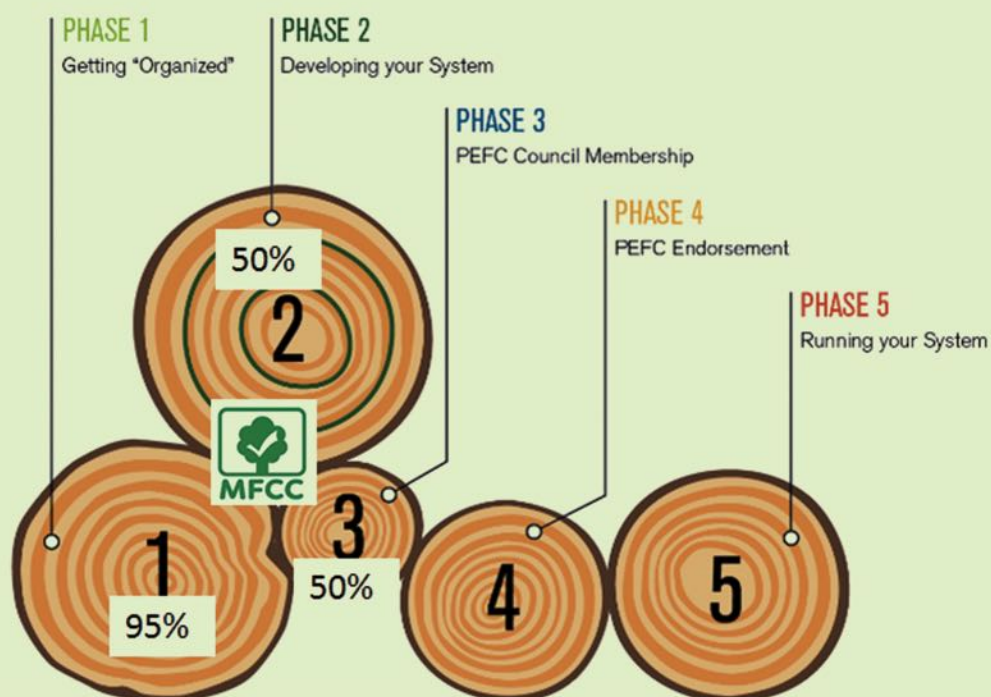


Figure 12. This is the normal phases for developing a national certification scheme, here is shows how much of each phase is already complete for MFCC

The plan for Delivering Certificates in Myanmar

Using international “Quality Infrastructure” for certification is required to develop an internationally recognised system. During the project, capacity building and institutional strengthening will occur.

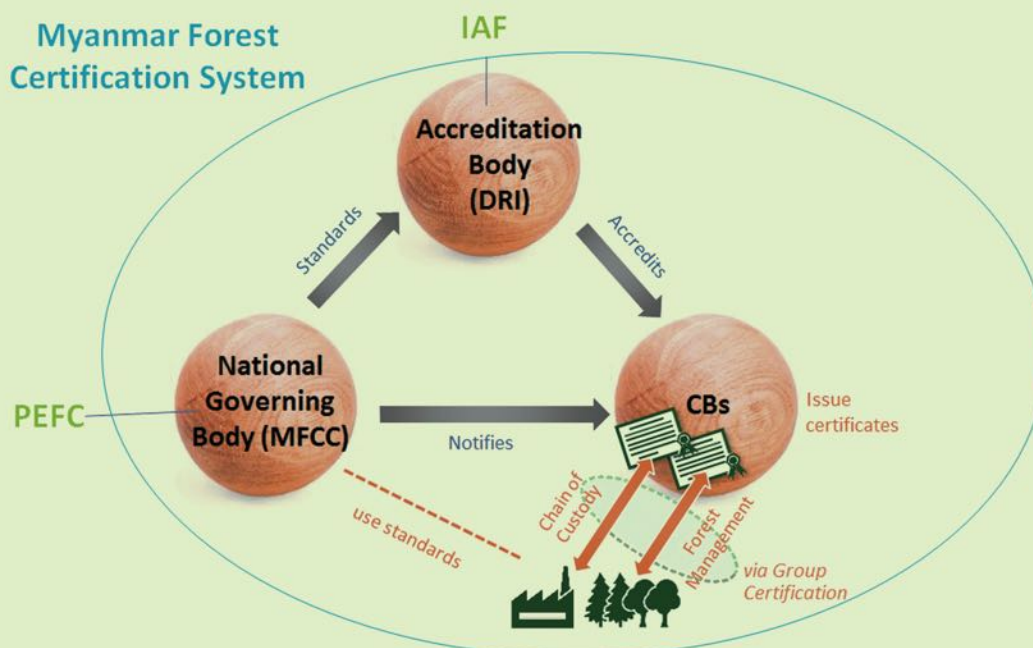


Figure 13. This shows the three organisations that are required for a 3rd party certification system. The plan includes Department of research of Innovation to be the accreditation body. Both MFCC and DRI will have international recognition through the Programme of the Endorsement of Forest Certification (PEFC) and International Accreditation Forum (IAF) respectively.

Supply Chain Actors Enabling MFCS

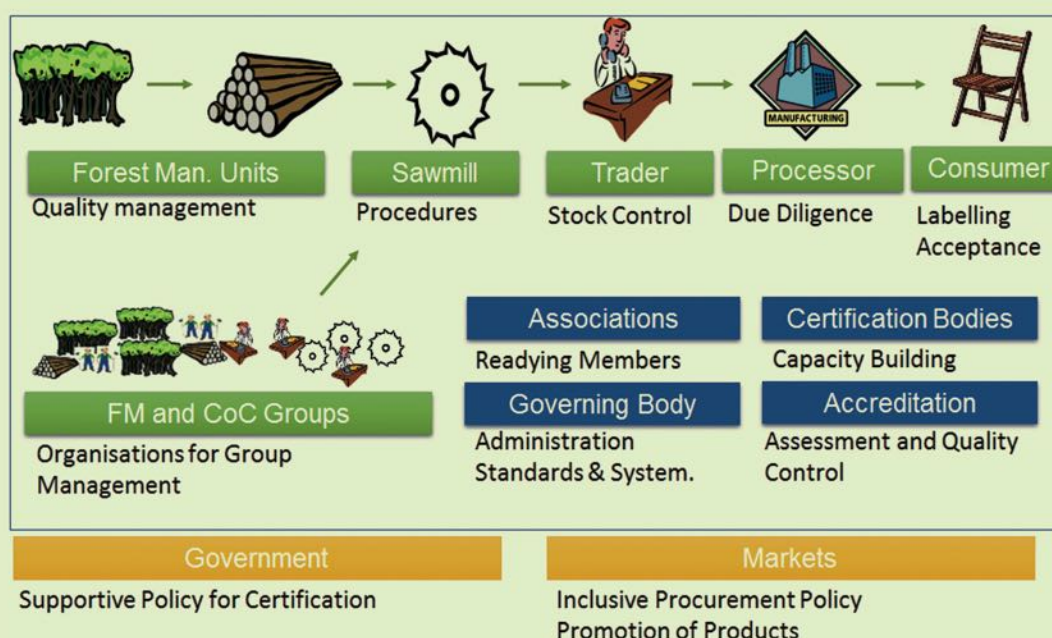


Figure 14. This is the key actors, services providers and enablers for the MFCS to work. Also the activities for each are mentioned. This shows the variety of players required to.



Working in partnership to bring sustainable management to Myanmar's forests

A project supported by Prince Albert II of Monaco.
Implemented by Myanmar Forest Certification Committee (MFCC) &
Programme for the Endorsement of Forest Certification (PEFC)



MFCC NEWSLETTER UPDATE

Issue 2/18
8 August 2018

Message from the Chairman

Myanmar Forest Certification Committee (MFCC) is the National Governing Body (NGB) of forest/timber certification schemes in Myanmar. Currently there are two schemes operating in Myanmar:

- The Myanmar Timber Legality Assurance System (MTLAS);
- The Myanmar Forest Certification Scheme (MFCS).

MFCC grew out of the Timber Certification Committee of Myanmar (TCCM). As a non-profit, non-political and impartial organization TCCM was established in 1998 to support Sustainable Forest Management, a Myanmar Timber Legality System, and improve access for Myanmar timber on the international market. The TCCM was changed to MFCC through a Ministerial Formation Order in 2013 – 'Notification No.(24/2013)'.

MFCC comprises representatives from the Myanmar Ministry of Natural Resources and Environmental Conservation (MONREC), related and relevant Myanmar Ministries, environmental NGOs, Private Sector and research and academic institutions.

There is plan underway for the reformation of the MFCC to strengthen its multi-stakeholder committee, as well as the soft launch of the third party system. Join us on our website (www.mfcc.com.mm) and various social media to group updated.



Yours sincerely,

U ShweKyaw
Chairman
MFCC



Strengthening the MFCC Organization

A strengthened organisation chart was approved by 19th MFCC meeting in the figure. The Chairman and MFCC members decide the overall policy and direction in carrying out MFCC's activities in broad terms and with particular regards to MFCS and MTLAS.

Organisational Chart of MFCC

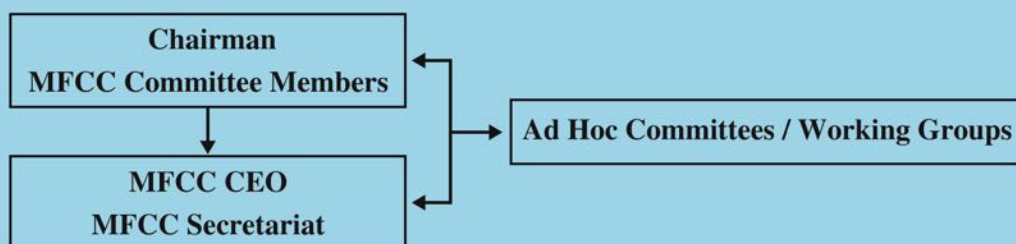


Figure 1. High Level Organisational Chart of MFCC

MFCC is assisted by the management team (MFCC Secretariat) headed by the Chief Executive Officer (CEO). The management team implements day-to-day activities of MFCC on behalf of the MFCC Members.

Ad Hoc Committees will be created for specific one-off roles such as dispute resolution and screening and evaluating Certification Body applicants.

MFCC- PEFC project Coordination meeting, Sustainable forest management in Myanmar one-step closer

Date :26 June 2018

Venue: Jade room, Inya Lake Hotel

The half-day coordination meeting was attended by a range of stakeholders, including the Forest Department, Myanma Timber Enterprise and Department of Research and Innovation, FAO, FLEGT VPA advisors, international and national NGOs, certification bodies and the private sector.



Figure 2 Chairman announced the commitment to partnerships



Figure 3 Mr. Laity updated on PEFC and introduced the project between PEFC and MFCC

One year on, and MFCC as it reforms its forest sector is gathering pace. This was clear last month, as the Myanmar Forest Certification Committee (MFCC) held its first annual multi-stakeholder coordination meeting.



Figure 4 Project partners from MTE, FD, FLEGT, FFI, RECOFTC stand in the group photo after the project coordination meeting

This coordination meeting marks an important step in this 3-year project to support the country as it transitions to the sustainable management of its forests, funded jointly by the [Prince Albert II of Monaco Foundation](#), PEFC and MFCC.

Open and constructive cooperation

MFCC Chairman, U Shwe Kyaw, opened the meeting, encouraging open and constructive cooperation to help realize the project goals and deliver an operational national forest certification system in Myanmar within the next two years.

In its first year, the project has helped to strengthen the MFCC secretariat, field test Myanmar's timber legality assurance system (MTLAS) and establish cooperation between EU buyers and Myanmar wood industries. Project partners also helped to the national system documentation and conducted auditor training.



Figure 5 Partners discussed important issues such as the feedback from EU-Brussels meeting and the need for CF to be further considered

“Over the last six months, the auditor trainings and participatory assessments have been instrumental in building a robust pathway for credible assessments against the Myanmar Forest Certification System,” said Mr. Gan Boon Keong, an international forestry certification assessor who carried out the auditor training.

“Whilst Myanmar faces challenges to demonstrate the sustainability of its forest products, this first year has laid the necessary foundation to meet the project goals, and in particular develop the capacity of key partners to take the project forward,” concluded Richard Laity, PEFC International Development Officer, Southeast Asia.

Find out more at www.pefc.org

If you would like to learn more about how you could get involved in the partnership,

please contact: MFCC - timcertcom@gmail.com or PEFC International - development@pefc.org

- Find out more about the project
- Download the project brief(www.mfcc.com.mm)

Summary of activities

Timing	Activities
27 Nov -4 Dec	Participatory Assessment Training Part I Kawlin Timber Extraction Agency Field Visit “Training and Participatory Assessment for Timber Supply Chain” <ul style="list-style-type: none"> - Internal Meeting at MFCC - Training by Mr. Gan Boon Keong (Consultant) - Field Assessment - Visit Kawlin Depot and Private Factory - Three CB’s trained, Participatory Assessment begun (Part I)
19 Dec	17 th MFCC Meeting
5 Feb	18 th MFCC Meeting
22 Feb	Webinar Meeting with PEFC (Sarah) , traders and other stakeholder
13 - 20 March	Participatory Assessment Training Part II (MTLAS Principle 5 & 6) <ul style="list-style-type: none"> - Visit MTE No. (8) Sawmill - Winding Up of the Training - MFCC Documentation - Finalize the MTLAS Checklist
26 March	Project code and Document setting
30 March and 3 April	Finalization of MTLAS Audit Form with the coordination of MTE and FD
30 April	19 th MFCC Meeting
2-12 May	Certification Bodies Assessed Extraction agencies against MTLAS The following are the assessed areas; <ul style="list-style-type: none"> ➤ Sagaing Region, West Katha and Kawlin Extraction Agency (United Forestry Services Co., Ltd) ➤ Magway Region, Gangaw , Thayet Extraction Agency (Nature Watch Co., Ltd.)
18- 21 June	MTLAS Training and corrective actions in report writing for Certification Bodies
26 June	MFCC- PEFC project Coordination meeting at Inya Lake Hotel, Yangon

Participatory Assessment Training Part I

Date: 27 Nov to 4 Dec 2017

Venue: Kawlin Extraction Agency

On 27 Nov to 4 Dec, MFCC and certification bodies visited Kawlin extraction agency assessment against MTLAS. The resolution is to understand 2017-18 extraction year's chain of custody from the beginning of timber extraction, transportation and inspection to the end of finished product at sawmill. Participants were from MFCC, representatives from MTE, Forest Department and third-party certification bodies including five auditors. MFCC invited professional trainer Mr. Gan Boon Keong from Malaysia to train the Forest Certification Process and Procedure. There were literature and practical trainings during 7 days and assessed no.29, Nan Kham Compartment, WonTho Township and no.196, Kaing Shae Compartment, PinlaeBu Township.

Figure 6
Mr.Gan explained how to verify 2013-14 extraction MTLAS system at no.29, Nan Kham compartment. This stump was selected based on the consignment of finished products under investigating in Europe.



Figure7
Field Assessment participants group photo at no. 196 Kaing Shae compartment completing a participatory assessment of 2017-2018 extraction area



17th MFCC Meeting

Date: 19 Dec 2017

Venue: MFCC Office

U ShweKyaw, chairman of MFCC called on 19th of December for the reforming of MFCC members against legal entity and PEFC requirements. MFCC needs reforming members since the latest MFCC reform meeting was held on July 2013. During the meeting, U Barber Cho announced the previous and follow-up MFCC-PEFC Risk Assessment and provisional acknowledgement of third-party certification bodies. MFCC decided to continue working with current staffs as MFCC and PEFC accept the legal entity although there will be more representative staff members from different sectors in the future.



*Figure 8
U ShweKyaw(Chairman)
talked about reformation
of MFCC membership, with
the draft statutes been approved*



*Figure 9
U Barber Cho (Secretary) presented the
requirements of certification bodies and follow up
MFCC- PEFC Risk assessment for 17/18 extraction
that is MTLAS verified*

18th MFCC Meeting

Date: 5 Feb 2018

Venue: MFCC Office

18th MFCC meeting was discussed on requirements to recognize International third-party CB, MFCC member reform and future MFCC projects. In the long-term Forest Management certification will occur, however the timber supply chain and MTLAS are the first priority to work on, according to the stepwise approach. CB screening was carried out on certification bodies including Nature Watch and United Forestry, Double Helix. MFCC was updated on the plan to finish MFCC system documentation. The members also approved the requirements for auditors, for example one forester and qualified lead auditor in each Certification Body as minimum requirement. In additional MFCC improved TOR (Terms of Reference) to become a Service agreement for third-party contract to made stronger.



Figure 10 U Shwe Kyaw (Chairman) presented the acknowledgement of three local CBs and one international CB

Webinar Meeting with PEFC

Date: 22 Feb 2018

U Shwe Kyaw, Chairman of MFCC welcome more than 20 participants to Webinar on the updates, outlooks and discussion on the PEFC&MFCC project in Myanmar.

During the webinar MFCC provide the overview of the PEFC & MFCC project, activity update and plan for the coming second and third quarters. After the short presentations, there was the discussion session to know about outlooks, comments and suggestion especially on the supply chain verification. It is intended to clarify the activities on the timber legality, traceability of timber to the origin of the forest and 3rd party verification under MTLAS. The webinar was a good opportunity for private sector to understand MFCC and how to use MTLAS phase I.



Figure 11 U Shwe Kyaw (Chairman) discussed MFCC-PEFC project activities update and plan for next plan

Participatory Assessment Training Part II: Principles 5 & Audit Document preparation

Date: 13 to 21 March 2018

Participatory Assessment Training Part II which led by Mr. Gan Boon Keong and Mr. Ismail took place at MTE No.8 Sawmill and National Wood private sawmill from 13 to 21 March together with Secretariat staffs and third-party representatives. The assessment was checked against MTLAS principle 5, 6 and the results were analyzed by representatives of MTE and Forest Department after the training. The training also intends to give replicating courses to MTE, Forest Department and private sectors subsequently. During the training, System Documentation Professional Mr. Paul Wilson coordinated with MFCC for MTLAS Document system: Mr. Ismail introduced COC and the importance of segregation.



*Figure 12
Introduction of
MTE sawmill (8) extraction
procedure and showing
evidence for completing
the MTLAS Checklist*

*Figure 13 U Barber Cho(Secretary)
introduced the MTLAS system and
explained MTLAS principle 5*



Documentation of the MFCS

Date: 26 March 2018

Venue: MFCC Office

This diagram below shows the main documents associated with the MFCS, including MTLAS Phase 1 and 2. These documents were developed in consultation with the Technical Evaluation Committee in MFCC, in preparation for compliance to international certification system requirements. It is a simplified diagram which has a tiered documentation structure such as those detailed in Table 1.

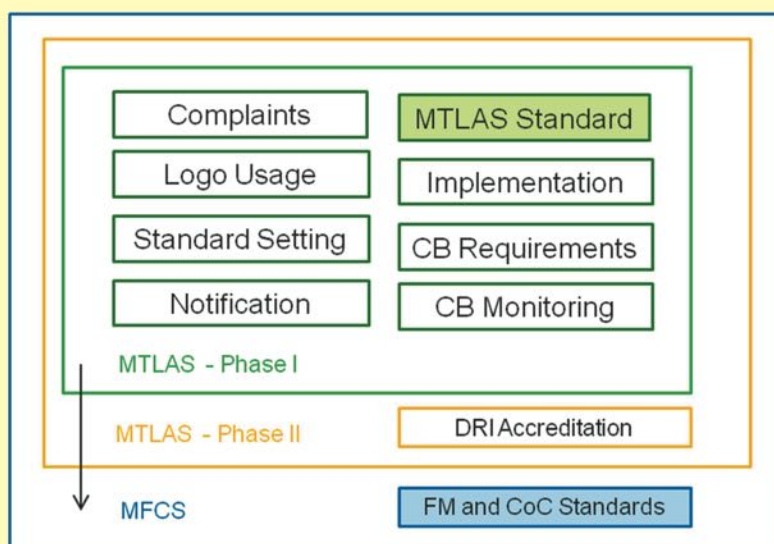


Figure 14 This is an overview of the key documents

Key

Policy	- P
Standard Operating Procedure	- SOP
Form	- F
Template	- T

Table 1. Key documents developed to build MTLAS Phase 1 and approved by MFCC

Section	Type	No	Document Title
MFCC	P	1	Implementation Arrangements
MFCC	P	2	Guiding Principles
GP	F	1	Guiding Principles Declaration
GP	F	2	Conflict of Interest Disclosure
MFCC	P	3	Standard Setting
MFCC	P	4	Stakeholder Engagement and Public Documents
MFCC	P	5	Certification Body Requirements
MTLAS	P	1	MFCC Trademark Usage
MFCC	SOP	1	Notification of Certification Bodies
MFCC	SOP	2	Complaints, Appeals and Disputes
MFCC	SOP	3	Document Control and Record Management
DC	T	1	Policy and Procedure Template
DC	T	2	Form Template



Figure 15 General Discussion about the system documentation and coding system



Figure 16 Documentation consultant Paul (centre) explaining the documentation structure to the Technical Review Committee

19th MFCC Meeting

Date: 30 April 2018

Venue: MFCC Office

After Participatory Assessment part II, MFCC approved to provisionally acknowledge Local third-party Certification Bodies, Nature Watch and United Forestry on 30th April at MFCC meeting.

The first draft of MTLAS documentation which is prepared by documentation expert Mr. Paul Wilson was ready in middle of March. MTLAS assessment form will release to MTE and Forest Department and also upload on website to assess online in the future. 2017-2018 Extraction has been taking place and Double Helix was nominated to hire for Area Risk Assessment against PEFC Controversial Sources. MFCC also recommended the members for provisional acknowledgement of the Myanmar Forest Association (MFA) and Double Helix in upcoming 20th MFCC meeting.



Figure 17 U Shwe Kyaw (Chairman) presented first draft of MTLAS documentation and to inform upload on website to MFCC member



Finalization of MTLAS Audit Form with the coordination of MTE and FD

Date: 30 March and 3 April 2018

Venue: MFCC Office



Figure 18 Finalize MTLAS Audit Form with the coordination with MFCC, FD and MTE

Certification Bodies Assessed Extraction agencies under MTLAS Testing

Date: 2-12 May 2018

Venue: Sagaing and Magway Region

During the first week of May, Nature Watch and United forestry Services visited Sagaing and Magway Region to assess against MTLAS system. Each body includes five auditors and assessed four extraction agencies in total. This is required before the Certification Body can be fully acknowledged as a CB,

The following auditing activities were completed.

United Forestry Services assessed area:

- i. West Katha Extraction Agency,
Forest Department (Katha District),
Thet-Kal-Chin Agency Depot,
Harvesting Area- Ka Pyin Lwin Gyi (PPF)



Figure 19 Random checking the log at Thet- Kal-Chin Agency Depot



Figure 20 Checking the stump at West Katha Extraction Agency

ii Kawlin Extraction Agency, Forest Department at Kawlin, (Harvesting Area – Compartment 196, Kaing Shae Reserve Forest), Pay Kone Agency Depot



Figure 21 Manager (Kawlin Extraction Agency) explained the extraction procedures



Figure 22 Manager(Kawlin Extraction Agency) explained the marks on the logs and how to check them.

Nature Watch Assessed areas are:

i. Thayet Extraction, Mindom Reserved Forest, Compartment no. 25, Protected Public Forest (PPF) 51 and Windwin, ZepyuKwin and Kyaut Ting Depot



Figure 23 Random checking the logs against the log list measurements as required by MTLAS



Figure 24 The representatives staffs of FD and MTE explained the forest boundary demarcation of this permeant reserved forest. This was an Corrective Action in the participatory assessment that has now been addressed.

ii. Gangaw Extraction Agency, KunZe Reserved Forest, Compartment no. 65 and Long Hton Reserved Forest, Compartment no. 18



Figure 25 Nature watch conducted to verify random sampling the logs to ensure segregation is possible with each log clearly marked by the revenue number.



Figure 26 Nature watch conducted to check the marks on the stump to ensure they are consistent with the FD and MTE contract

MTLAS part III: Training for Certification Bodies on report writing and issuing corrective action

Date: 18- 21 June 2018

Venue: MFCC Office

Professional trainer (Mr. Gan Boon Keong) conducted MTLAS part III training for Certification bodies (three local CBs and one international CB). The training emphasized about the MTLAS checklist/ Audit Form and report writing. Certification bodies presented their field experiences and difficulties which are related to checklist/audit form. The trainer explained rules and regulations for certification bodies and policy documents and the roles and responsibilities of auditors. Mr. Gan presented his training materials (Part 1 – 3) to Certification Bodies. He pointed out that each certification body must conduct training for every auditor by using those training materials.

On 21 June, Discussion is led by Mr. Paul Wilson (Document expert) about document naming system and Mr. Gan training materials will be put into Certification Bodies application manual. And, they discussed certification body requirements, service agreement and issuing of certificate.



Figure 27 Mr. Gan providing MTLAS part III training to MFCC and Certification Bodies

Certification Bodies Profiles

Myanmar Forest certification committee acknowledged three local Certification Bodies and one international Certification Body. Three local CB are United Forestry Services, Nature Watch and Myanmar Forest Association. One international CB is Double Helix.



Contact person

U Tin Aung Moe, Managing Director
09-9797005161, 09420330417
tinaungmoe1@gmail.com



Nature Watch
Co., Ltd.

Contact person

U Soe Win Htoon (Director)
09 5063563
swhtoon@gmail.com



MYANMAR
FOREST
ASSOCIATION

Contact person

U Myo Lwin (Director)
09 250685406
Umyolwin56@gmail.com



Contact person

U Aung Myin, Senior Timber Verification Expert
09 5350333
Aungmyin.forestry@gmail.com

Contact Us:

Myanmar Forest Certification Committee (MFCC),
Forest Compound, Bayintnaung Road,
West Gyogone, Insein Township (11011),
Yangon, Myanmar

timcertcom@gmail.com

Telephone (office):

+95 13644430

+95 1 3644431

Contact person:

Win Hlaing (CEO)

wynnnhlaing@gmail.com

www.mfcc.com.mm

Twitter : @mfcc_official

Instagram: myanmar_forest_certification

Facebook : @MFCCCommittee

Youtube : MFCC_Official



Contact
www.pefc.org
development@pefc.org
 Office Tel: +41 22 799 45 40

Contact Person:
 Remi Sournia
 Head of Projects & Development,
remi.saria@pefc.org



www.mfcc.com.mm

Twitter : @mfcc_official
 Instagram: myanmar_forest_certification
 Facebook : @MFCCCommittee
 Youtube : MFCC_Official