



ITTO
INTERNATIONAL TROPICAL
TIMBER ORGANIZATION



Strengthening SFM Standards and Timber Legality Framework in Myanmar

Funding partner : **Forestry Agency of Japan**
Lead applicant : **Myanmar Forest Certification Committee (MFCC)**
Main project partner : **International Tropical Timber Organization (ITTO)**

Project Description

Myanmar is a forest resource rich country with around 28.5 million hectares of forest areas which represent about 42.19% of the total land area. The country has also around 18.7 million hectares of other wooded land. Forests are tremendously important in Myanmar for the well-being of its over 34 million rural people out of its total population of 54 million, especially poor, as well as the country's ecological integrity and economic development. They support basic household needs and livelihoods, commercial production, export earnings, and employment. Although Myanmar possesses quite a remarkable forest management system with a large number of highly qualified forestry professionals, Myanmar has faced challenges in its efforts towards sustainable forest management certification and timber legality systems.

The project's development objective is to contribute to the achievement of sustainable forest management in Myanmar through strengthening national certification systems of forest management and chain of custody as well as a timber legality verification system. The project will address the challenges Myanmar faces with market access for timber and focus on the continued improvement of Myanmar Forest Certification System (MFCS), and Myanmar Timber Legality Assurance System (MTLAS) and their efficient and effective implementation. Significant capacity building interventions, including the application of QR codes for log tracking, will be implemented to develop the robustness of the mechanisms and infrastructures that underpin Myanmar's timber certification systems. Standard and system development will hinge on wide stakeholder consultation, with international best practice processes that will serve to foster an environment of mutual trust and ownership amongst forest sector stakeholders. The project results will be sustainable through creating economically viable certification systems, ensuring capacity interventions can be multiplied, and supporting locally generated, cost effective timber tracking technologies. In the longer term the systems created will play an important role in advancing sustainable forest management while enhancing the sustainable supply of vital goods and various ecosystem services from valuable tropical forests in Myanmar to support the achievements of SDGs in particular SDG 12 (Responsible production and consumption) and SDG 15 (life on lands).

Strengthening SFM Standards and Timber Legality Framework in Myanmar

Key Objectives

1

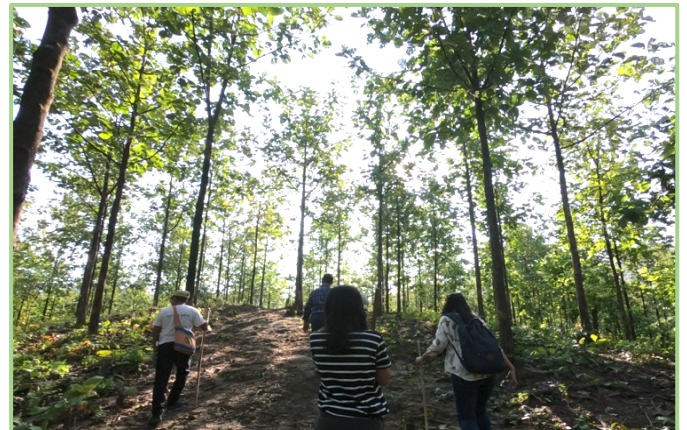
Strengthen and up-scale MFCS, MTLAS and CoC Certification

2

Operationalise Myanmar's DTTS (Digitalized Timber Tracking System) to ensure timber traceability

3

Assure wider acceptance of Myanmar's Certification systems on international markets



For Further information about how to join in this above project as a partner or financial supporter, please contact the organizations below.

Myanmar Forest Certification Committee (MFCC)

MFCC is set up to develop forest product standards to ensure the sustainable management of Myanmar's forest resources. MFCC serves as the National Governing Body of the Myanmar Timber Legality Assurance System (MTLAS) and the Myanmar Forest Certification Scheme (MFCS). The MFCC Secretariat, guided by the MFCC Chairman and Committee Members, carries out the day-to-day activities of the Committee.

International Tropical Timber Organization (ITTO)

ITTO is an intergovernmental organization promoting the conservation and sustainable management, use and trade of tropical forest resources. Its members represent the bulk of the world's tropical forests and of the global tropical timber trade. ITTO develops internationally agreed policy documents to promote sustainable forest management and forest conservation and assists tropical member countries to adapt such policies to local circumstances and to implement them in the field through projects. In addition, ITTO collects, analyzes and disseminates data on the production and trade of tropical timber and funds projects and other actions aimed at developing sustainable forest industries at both the community and industrial scales.

CONTACT:

Myanmar Forest Certification Committee (MFCC)

 Forest Department Compound, Bayintnaung Road, West Gyogone, Insein Township, 11011, Yangon, Myanmar

 info@myanmarforestcertification.org

 <https://www.mfcc.org.mm>

 <https://www.facebook.com/MFCCCommittee>

Contact person: Barber Cho, Secretary, secretary@myanmarforestcertification.org

International Tropical Timber Organization (ITTO)

 1-1-1 Minato-Mirai, Nishi-Ku, Yokohama 220-0012, Japan

 itto@itto.int

 <https://www.itto.int/>

 <https://www.facebook.com/ittosfm>

Contact person: Ma Hwan-ok, Project Manager, ma@itto.int