



STRENGTHENING SFM STANDARDS AND TIMBER LEGALITY FRAMEWORK IN MYANMAR

Project Supported by Forestry Agency of Japan
Implemented by Myanmar Forest Certification Committee (MFCC) &
International Tropical Timber Organization (ITTO)

Newsletter Issue 3 - September 2022

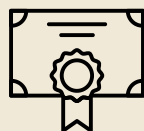
ABOUT MFCC

Myanmar Forest Certification Committee (MFCC) is the National Governing Body (NGB) of forest/timber certification schemes in Myanmar and a central part of the mandate is to carry out forest and timber certification and create an enabling environment for the sustainability of Myanmar forests. MFCC also aims to promote market access to Myanmar forest products in international trade. MFCC's activities cover the entire forest and forest products, and MFCC has been empowered to execute all processes of forest and timber-related certification.

For more information please visit: <https://www.mfcc.org.mm>



Transparency



Certification



Third Party Verification



Partnership

After 24 years of establishment, the Secretariat of the MFCC believes it is about time to revisit the vision and mission statement and revise it to make sure it's attuned to what is happening in the global environment. With those below new statements, we reflect our commitment to carry out forest and timber certification and create an enabling environment for the sustainability of Myanmar Forests in line with the international framework.

MFCC'S VISION

"A sustainable country where forest resources are conserved and contribute towards global sustainability."

MFCC'S MISSION

"To advocate the forest ecosystems and forest conservation through Sustainable Forest Management practices and timber legality certification in Myanmar and develop the international market through sustainable timber industry."

Message from Secretary



First and foremost, I am thrilled to announce a significant accomplishment by MFCC: the successful endorsement of the Myanmar Forest Certification Scheme (MFCS) as the Myanmar National Standard (MMS32/2022) by the Myanmar National Standard Council in May 2022. This achievement marks a major milestone in our journey, although it is not the culmination of our efforts. It serves as a prerequisite for the development of certified forests. Another crucial requirement is the establishment of Certification Bodies (CBs) responsible for assessing the quality of forest management in accordance with MFCS and issuing relevant certificates. To fulfill this objective, MFCC is working in collaboration with the Department of Research and Innovation, Ministry of Science and Technology, with the support of the ITTO Project "Strengthening SFM Standards and Timber Legality Framework in Myanmar."

The first Project Steering Committee meeting under this project was held in May 2022 to provide support for ongoing activities.

In terms of legality, MFCC has taken the initiative to introduce digitalized technology in the supply chain through the use of QR codes, a development previously undertaken by Myanmar Timber Enterprise few years ago. Traceability is a crucial aspect of the Chain of Custody (CoC) for forest products, which will be demonstrated through appropriate documentation and technology. We will share further details with all stakeholders once they are ready.

I must mention a notable event that took place recently—the Expert Round Table Meeting. The purpose of this meeting was to explore ways to involve Civil Society Organizations (CSOs) in the process. The meeting, which specifically invited participants from the Myanmar Environmental Rehabilitation-conservation Network (MERN) and former high-ranking officials from the Ministry of Natural Resources and Environmental Conservation MONREC, shed light on the role of Monitoring and Patrolling while emphasizing the essential nature of CSO participation.

Finally, on behalf of MFCC, I would like to express profound gratitude to all organizations and individuals who have supported us in our efforts to strengthen Sustainable Forest Management (SFM) and Legality Practices in Myanmar. I want to assure you that MFCC's focus has always been on developing systems in accordance with international practices, rather than seeking quick fixes for market-related issues.

MTLAS (The expert round table meeting for updating, filling gaps of MTLAS – 2013 & discussion for the Role of Independent Third-party Monitoring)

MFCC reviewed all of the previous assessment reports related to MTLAS and conducted the Expert Group (EAG) Meetings. The current assessment of the MTLAS revised version has been approved by EAG meeting on 3rd of June and agreed by MFCC members meeting on June 13th. The expert round table meeting for updating, filling gaps of MTLAS – 2013 has been held as a full day meeting and also discussed the possibility of independent third-party monitoring in the MTLAS assessment. And the project team sent out the MTLAS for the Stakeholder Consultations for (30 days) on June 28th 2022, according to the MFCC Standard-Setting Policy (MFCC P 3 SS).



Integration of Digitalization of Timber Tracking System (DTTS)



MFCC is currently conducting DTTS Technical Working Group Meeting every month with the DTTS Technical Working Group and its stakeholders. DTTS TWG was formed with (20) members and review the existing QR Code system that MTE practiced. The team also accomplished the assessment report according to the output and activities. DTTS members discussed the solutions for the DTTS process and they also conducted the field visit at the private company, Green Gold Industry - GGI, who successfully initiated the software application to monitor the manufacturing operations recording yield, specification, quality, quantity, source of timber to the oversea buyers, etc. Before this visit, MFCC Team made a consultation meeting with the GGI Team to meet the requirement of traceability covering the forest, transportation and manufacturing.

According to one of the DTTS sub-activities, the project management team received three assessment reports. The project management team finalised those Assessment Reports and discussed the selection of the pilot area for DTTS at the 7th DTTS and 10th EAG meeting. The Forest Department proposed Naypyitaw District for the pilot area tentatively and processing to get the approval from MFCC. Supporting the available resources, MFCC is enquiring the available resources (GPS, Computer etc.) for the DTTS process.



Synergies with Department of Research and Innovation and other relevant participants from Myanmar Accreditation Division for ISO Process

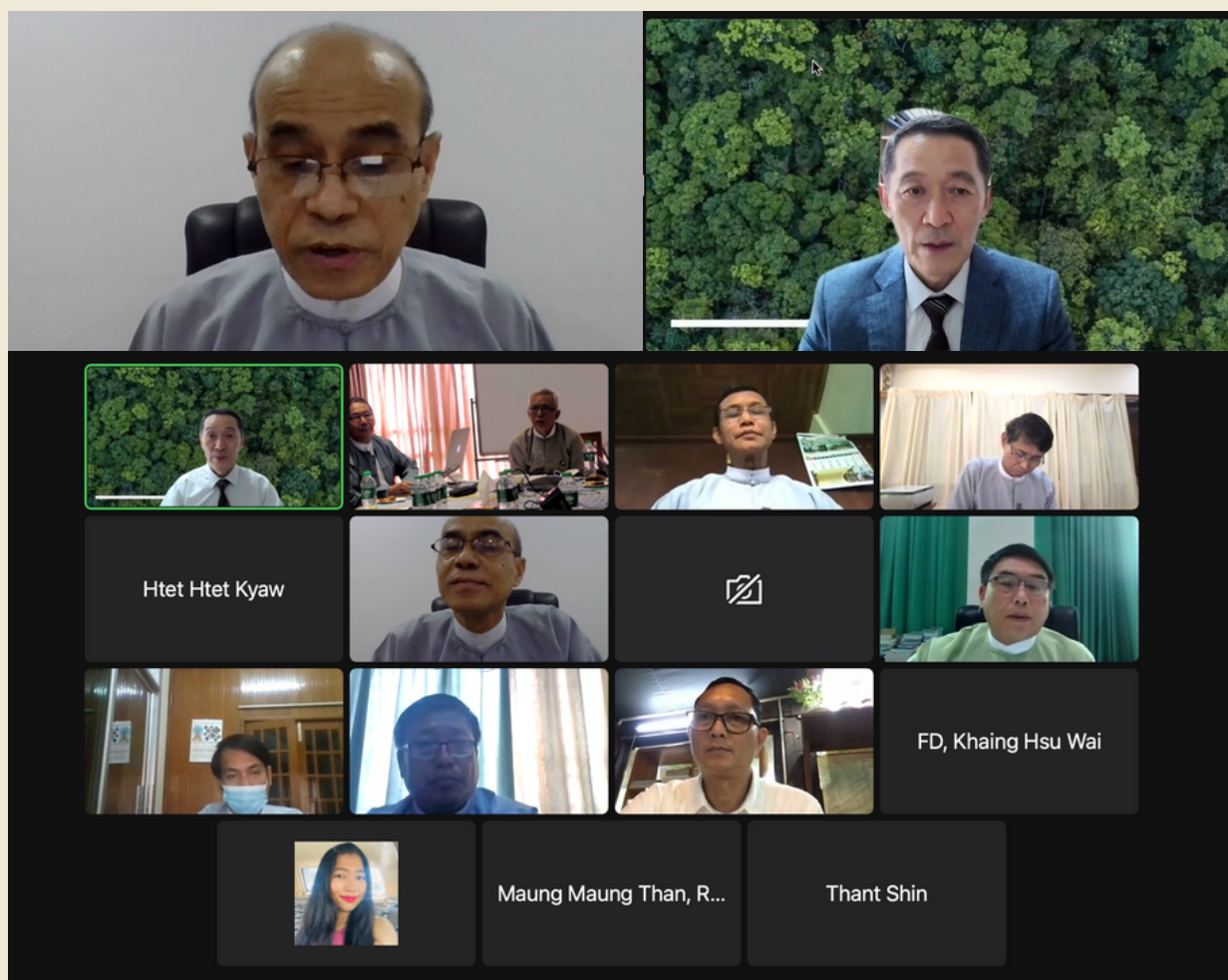
The Myanmar Forest Certification Committee is continually cooperating with relevant departments including the Department of Research and Innovation to fully achieve the National Standard endorsement of Myanmar Forest Certification Scheme (MFCS) and Myanmar Timber Legality Assurance System (MTLAS).

In such cooperation with DRI, MFCC hopes for developing a quality Certification Body (CB), quality infrastructure and gaining international recognition and ISO accreditation for the current Certification Bodies

MFCC is working on a (2) year project in collaboration with the International Tropical Timber Organization-ITTO supported by Forestry Agency of Japan. In the first week of July 2022, MFCC secretariate team including MFCC-ITTO project CEO Mr Win Hlaing and MFCC Secretary Mr. Barber Cho met with the Director General Dr. Phyu Phyu Win of the Department of Research and Innovation to discuss the cooperation, synergies between the Department of Research and Innovation & MFCC in order to achieve the project's goals.



MFCC-ITTO Project Steering Committee Meeting



MFCC hosted the Project Steering Committee meeting for the current MFCC-ITTO project on May 2022, some discussion and decision points includes hiring the international consultants for this project which is currently in some progress; discussion on implementation of the DTTS for the upcoming period as well as the new yearly plan of operation which has been already decided and discussed by EAG meeting; in which will be confirm and oversee by PSC members.



Certification Body Profiles

Myanmar Forest Certification Committee fully notified two local Certification Bodies and one international Certification Body. Local CBs are United Forestry Services, Nature Watch and international CB is Double Helix. Another local CB SGS successfully completed as provisional notification status and it is under the full notification process.



Contact Person

Tin Aung Moe
Managing Director
+95-9797005151, +95-9420330417
tinaungmoe@ufs-myanmar.com



Contact Person

Soe Min Naing
Director
+95-9444451678
minsoen99@gmail.com



Contact Person

Vicky Nang Htet Htet Ei Win
Timber Verification Expert
+95-9261967110, +95-9771960892
vicky@doublehelixtracking.com



Contact Person

Myo Min Than
SGS Myanmar Forestry Auditor
+95-9767558485
myomin.than@sgs.com

For further information please contact the organizations below:

Myanmar Forest Certification Committee (MFCC)

MFCC is set up to develop forest product standards to ensure the sustainable management of Myanmar's forest resources. MFCC serves as the National Governing Body of the Myanmar Timber Legality Assurance System (MTLAS) and the Myanmar Forest Certification Scheme (MFCS). The MFCC Secretariat, guided by the MFCC Chairman and Committee Members, carries out the day-to-day activities of the Committee.

International Tropical Timber Organization (ITTO)

ITTO is an intergovernmental organization promoting the conservation and sustainable management, use and trade of tropical forest resources. Its members represent the bulk of the world's tropical forests and of the global tropical timber trade. ITTO develops internationally agreed policy documents to promote sustainable forest management and forest conservation and assists tropical member countries to adapt such policies to local circumstances and to implement them in the field through projects. In addition, ITTO collects, analyzes and disseminates data on the production and trade of tropical timber and funds projects and other actions aimed at developing sustainable forest industries at both the community and industrial scales.

CONTACT:

Myanmar Forest Certification Committee (MFCC)

Forest Department Compound, Bayintnaung Road, West Gyogone, Insein Township, 11011, Yangon, Myanmar

 info@myanmarforestcertification.org
 <https://www.mfcc.org.mm>
 <https://www.facebook.com/MFCCCommittee>

Contact person: Barber Cho, Secretary, secretary@myanmarforestcertification.org

International Tropical Timber Organization (ITTO)

1-1-1 Minato-Mirai, Nishi-Ku, Yokohama 220-0012, Japan

 itto@itto.int
 <https://www.itto.int/>
 <https://www.facebook.com/ittosfm>

Contact person: Ma Hwan-ok, Project Manager, ma@itto.int